



Whitman County  
Public Health



Whitman County Public Health  
**2025 Impact Report**

Growing a Thriving Community

# Dear Whitman County Residents,

What does it look like to thrive locally, and how did Whitman County Public Health work toward growing a thriving community in 2025? The word “thrive” encompasses much more than the absence of physical illness. “Thriving” implies the presence of joy, growth, and good health.

*This report highlights public health data and initiatives from the past year that illustrate how we carry out our mission and help people thrive. Some aspects of our focus in 2025 included:*

## **Palouse Resource Guide**

Our team is working each quarter to reach out to our community organizations listed on the Palouse Resource Guide to update the information listed. We currently have over 250 organizations and 490 programs listed on the PRG

## **Question, Persuade, Refer (QPR) Trainings**

Throughout the county, we are bringing free QPR trainings to our residents. QPR is suicide prevention program designed to help individuals recognize warning signs of suicide and take action to help someone in crisis. It is often compared to CPR but for mental health emergencies.

## **Nutrition for Young Families**

Despite funding instability in our Women’s, Infants, & Children this year, we were adamant about keeping our program open and fully functioning throughout the government shutdown. This vital program supports healthy nutrition for all pregnant and breastfeeding women and children through the age of five.

**Please join us as we  
grow a thriving community  
through every season!**



**Chris Skidmore**  
DIRECTOR



**Corrin McMichael, MPH, CPH**  
DEPUTY DIRECTOR

### **ACKNOWLEDGEMENTS**

**Corrin McMichael, MPH, CPH**  
Project Lead

**Meghan Johns**  
Health Program Manager

**AnnaBelle Fredericksen**  
Lead Designer

## 2025 HIGHLIGHTS

# Personal & Family Health

Supporting individuals, children and families thrive in our community

### Whitman County Community Clinic

# 228

Total Vaccines Administered

**84** Adult  
Vaccines

**144** Childhood  
Vaccines

**141** TB Tests  
Administered

### WIC (Women, Infants, & Children)

WIC clients receive nutrition education and nutritious food at no cost to them.

# 310

Women, infants, and children were served from January–November 2025



## 2025 HIGHLIGHTS

# Personal & Family Health – Cont.

### Safe Kids

Keeps kids safe while playing, sleeping, and traveling



56

Bike  
Helmets



36

Car Seats &  
Booster Seats



3

Cribs



12

Sleepsacks



169

Lockboxes  
Distributed

37

CPR courses Paid for

In partnership with the Pullman Fire Department, we funded CPR training from June through December to help community members build life-saving skills and respond confidently in emergencies.



367

Swim Lessons  
Paid for

We pay for swim lessons for children to protect them from drowning. This activity is in partnership with rural community pools and Pullman Parks & Recreation.

### Thank You to Safe Kids Community Partners!

#### Pullman Police & Fire Department

Distributed car seats, safe  
sleep cribs, medicine lockboxes

#### Local Medical Providers

Distributed safe home bags

#### Colfax Police Department

Distributed medicine lockboxes

#### Whitman County Library District

Distributed bike helmets

#### Substance Use Prevention Education & Resources (SUPER)

Distributed safe home bags

#### Healthy Tekoa Coalition

Distributed medicine lockboxes



## 2025 HIGHLIGHTS

# Community Health

Preventing disease, responding to outbreaks, and keeping our community healthy



### Harm Reduction

We aim to minimize the injury, disease, and death associated with substance use at both the individual and community level.

#### Narcan Rescue Kits

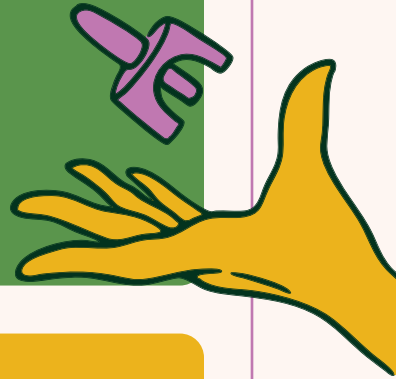
Narcan is a medication that saves lives if it's administered on time during an opioid overdose.

# 1,235

Narcan Rescue Kits Distributed

# 726

Narcan Distributed



# 50

Sharps Containers  
returned in the Needle  
Exchange Program

The Needle Exchange Program provides sterile syringes in exchange for used ones, reducing HIV and hepatitis while preventing discarded needles in community spaces like parks and playgrounds.

# 2,000

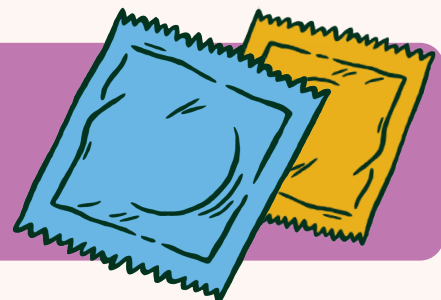
Fentanyl Test Strips Distributed

Fentanyl and xylazine test strips are a fast, simple way to detect fentanyl or xylazine in drugs and help prevent accidental overdoses.

WCPH partnered with WSU to distribute test strips on campus with instructions for proper use.

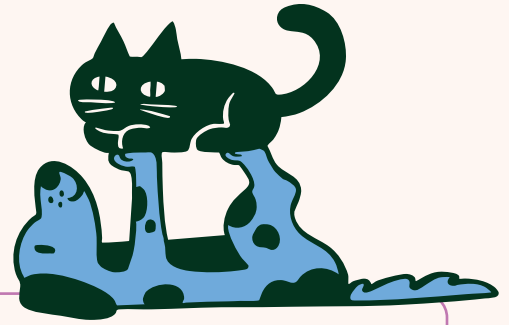
# 7,000

Condoms  
Distributed



## 2025 HIGHLIGHTS

# Community Health – Cont.



### Disease Prevention

Protects the community from serious illness and educates the community to prevent disease outbreaks

When medical providers report a positive lab result, we begin a case investigation to:

1. Interview the person
2. Identify the source of the reportable condition
3. Assess the risk of further spread
4. Provide guidance to help prevent transmission
5. Follow up with others who may have been exposed, if needed

**122**

Cases of Reportable diseases investigated (not including COVID)

**2**

Pertussis outbreaks

**88**

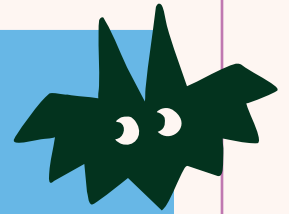
Animal bite reports investigated

**5**

People treated for rabies exposure

**1 bat**

Tested positive for rabies



### Serious Infectious Disease Monitoring

**19**

People monitored who were exposed to avian flu

**5**

People monitored who were exposed to measles



### Community Data

WCPH provides public health data to help improve Whitman County's health. Data requests are available at no cost to nonprofits, government entities, and schools. Visit [WhitmanCountyPublicHealth.org](https://WhitmanCountyPublicHealth.org) to explore reports and request data.

### Scan to View Reports



Or visit [WhitmanCountyPublicHealth.org](https://WhitmanCountyPublicHealth.org) and go to our Community Data Page under the Community Health tab.



## 2025 HIGHLIGHTS

# Environmental Health

Working to make our communities healthier places to live, work, and play



### Onsite Sewage Systems

Supporting home building and land development

**39** Site Evaluations

**23** Final Evaluation

### Solid Waste

**15** Responses to solid waste complaints

### Water Quality & Safety

We evaluate water systems & recreational facilities to ensure safety. All town water system reports are on our website. **Scan the QR code below to view your town's water system report.**

#### Drinking Water

**2**

Drinking water systems evaluated

#### Recreation

**21**

Pools & Spas Inspected

**13**

Harmful Algal Blooms samples taken

### Food Protection

Scan the QR code below to view food inspection scores

*\*Some establishments are inspected on a 12–18 month cycle, not annually.*

**197**

Food Establishments Inspected

**79%**

of All Establishments Inspected\*

**36**

School Cafeteria Inspections

**18** Total Schools in Whitman County

Each school cafeteria is inspected twice throughout the school year.

#### Scan to Water Reports

Or visit [WhitmanCountyPublicHealth.org](https://WhitmanCountyPublicHealth.org) and go to our Water Quality page under the Environmental Health tab.



#### Scan to Food Reports

Or visit [WhitmanCountyPublicHealth.org](https://WhitmanCountyPublicHealth.org) and go to our Water Quality page under the Environmental Health tab.





#### **Pullman**

1205 SE Professional Mall Blvd #203  
Pullman, WA 99163  
(509) 332-6752

#### **Colfax**

310 N Main Street Ste.108,  
Colfax, WA 99111  
(509) 397-6280

**Pullman location is moving! Soon we will be located at:**  
1240 SE Bishop Blvd, Ste. P, Pullman, WA 99163

**Follow us to stay up to date**



**Want to learn more about WCPH?**

Visit our website at [WhitmanCountyPublicHealth.org](http://WhitmanCountyPublicHealth.org)